

202L

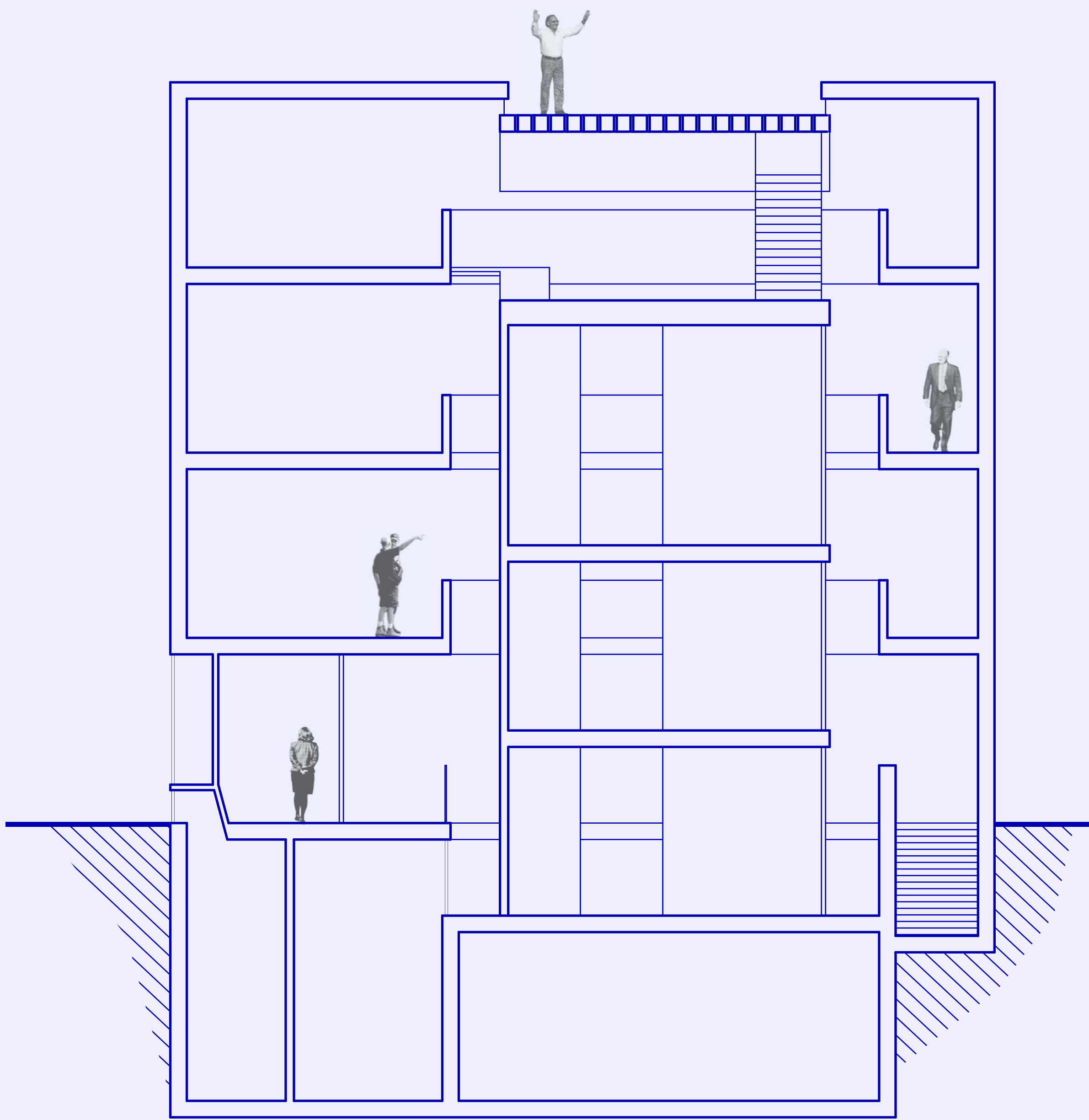
luis gil

instructor: professor alex pang

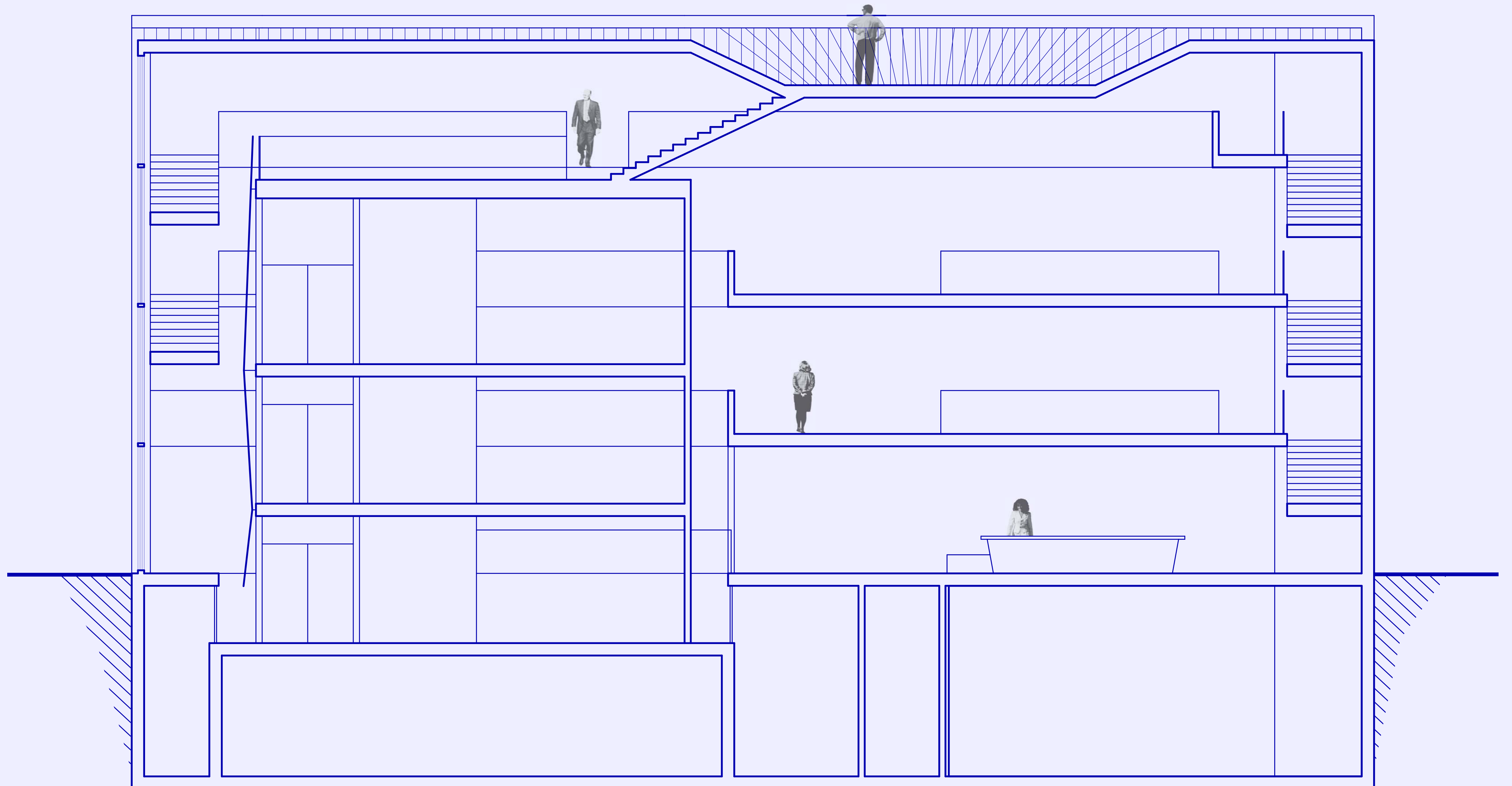
Most people are not familiar with Moghul miniature painting. Most people have not heard of ancient Mimbres pottery. Most people do not understand the importance of pre-colombian Andean textiles. Everyone, however, has to eat.

The proposed collection is admittedly not of great interest to the general public, at least not initially. My proposal, then is to make the cafe the focal point of the design. By placing the cafe on the top story, the patron is forced to walk through the exhibit areas to get lunch. It is connected to a rooftop courtyard, visible from street level, and is meant to draw people in from the street.

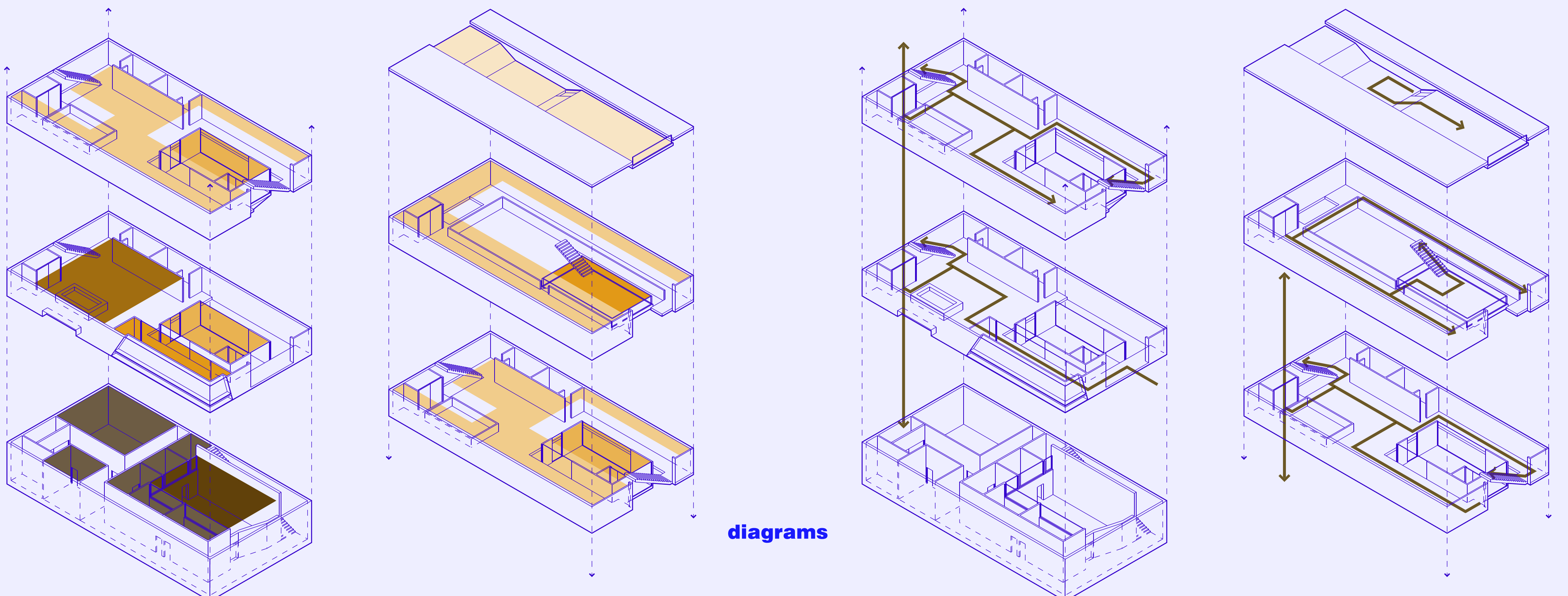
En route to the cafe, the patron must also wind around a seemingly sovereign mass within the museum. Creating a visible dichotomy between servant and served, this mass serves mainly as the conversation spaces, the idea being that by seeing how much meticulous care is put into restoring and maintaining these artifacts, the patron interest will be peaked.



latitudinal section, 3/16" = 1'-0"



longitudinal section, 3/16" = 1'-0"



diagrams

administration exhibit storage public space cafe/bookstore conservation exhibition space outdoor space